

# Benchmarking for College performance/measurable outcomes

Why and How!!!

Academic Senate Nov 5, 2013

Buran Haidar

# Performance measurable outcomes (Example: Achievement outcomes )

Performance Measurable Outcome A			
Academic Year	Year number	Value	SD
2007-08	1	70%	0.01
2008-09	2	72%	
2009-10	3	72%	
2010-11	4	71%	
2011-12	5	72%	
2012-13	6	?	

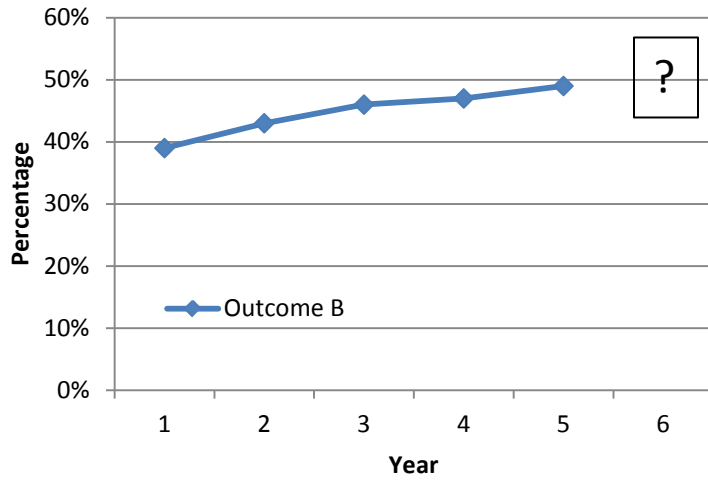
Performance Measurable Outcome C			
Academic Year	Year number	Value	SD
2007-08	1	452	58
2008-09	2	546	
2009-10	3	579	
2010-11	4	574	
2011-12	5	597	
2012-13	6	?	

Performance Measurable Outcome B			
Academic Year	Year number	Value	SD
2007-08	1	39%	4%
2008-09	2	43%	
2009-10	3	46%	
2010-11	4	47%	
2011-12	5	49%	
2012-13	6	?	

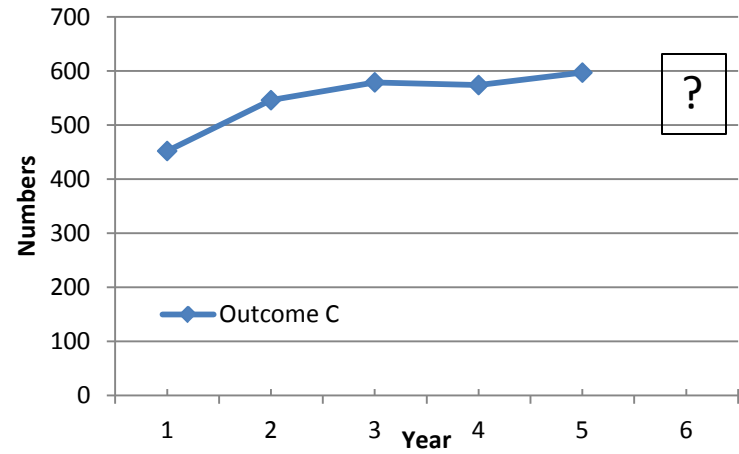
Performance Measurable Outcome D			
Academic Year	Year number	Value	SD
2007-08	1	609	112
2008-09	2	574	
2009-10	3	765	
2010-11	4	757	
2011-12	5	515	
2012-13	6	?	

**Benchmarking for accreditation purposes: Setting the expectations for upcoming time period (year)**

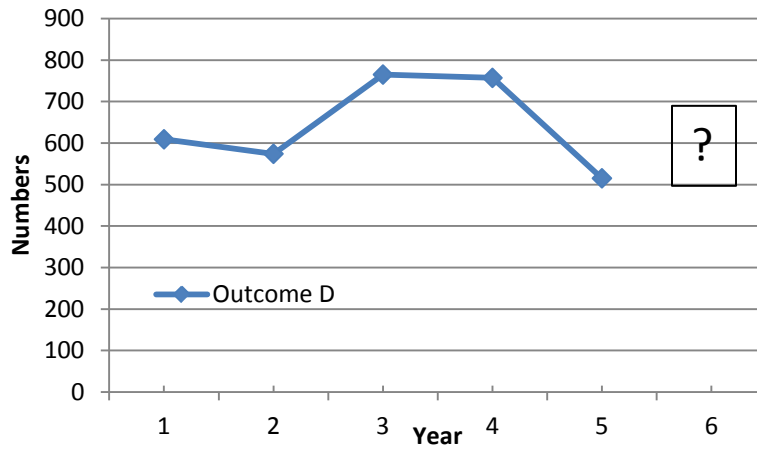
### 5-year data for Outcome B



### 5-year data for Outcome C

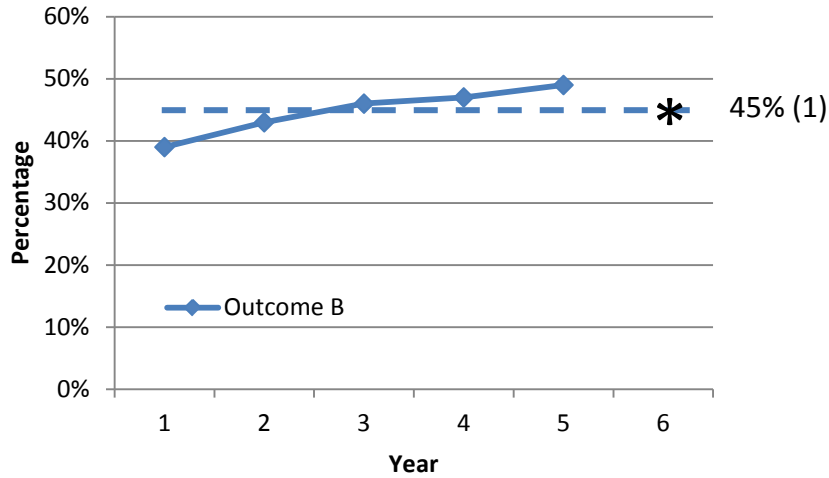


### 5-year data for Outcome D

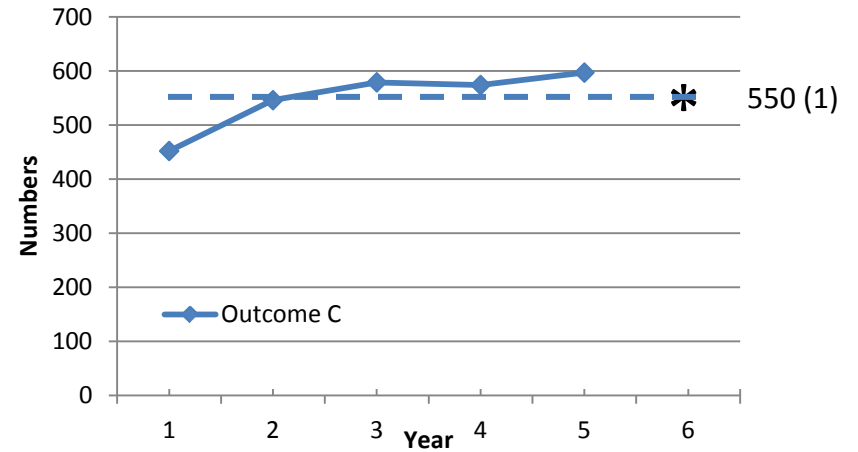


# Methodology 1 (5-year average)

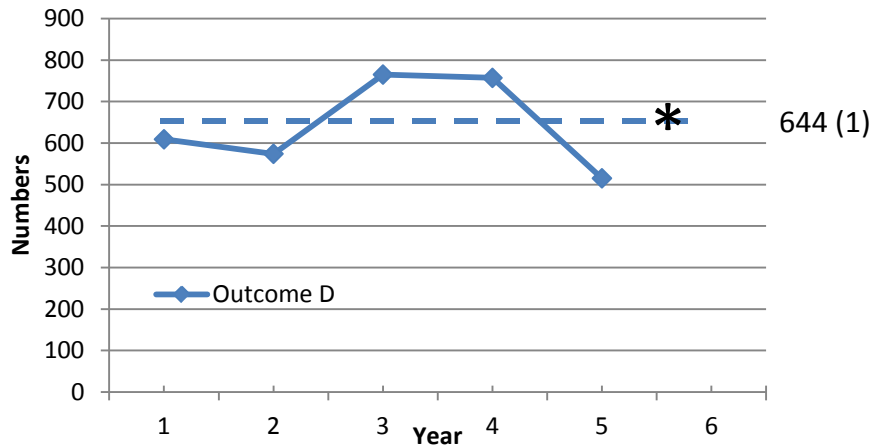
## 5-year data for Outcome B



## 5-year data for Outcome C

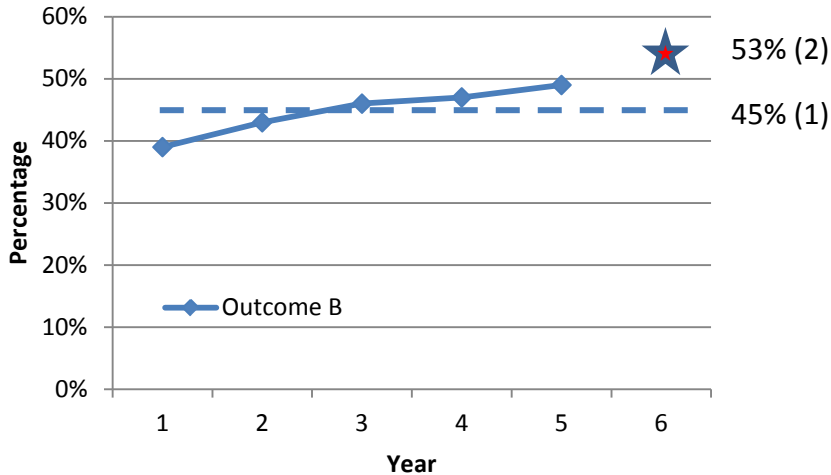


## 5-year data for Outcome D

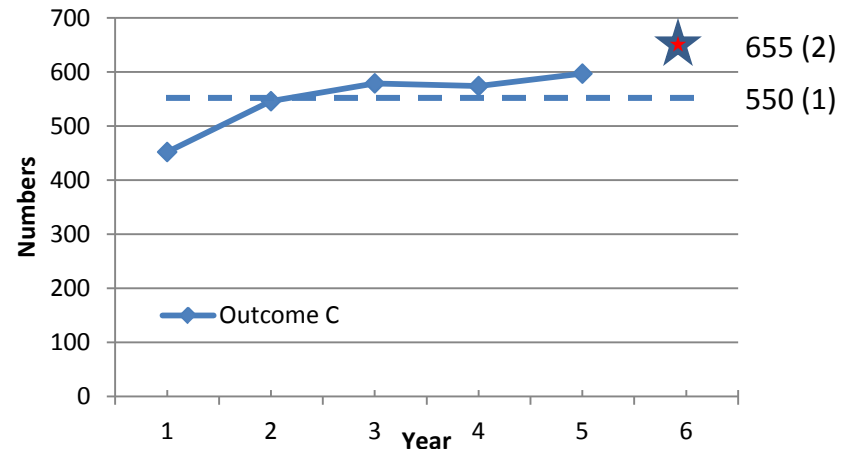


# Methodology 2 (Latest year 5 value + SD of past 5 years)

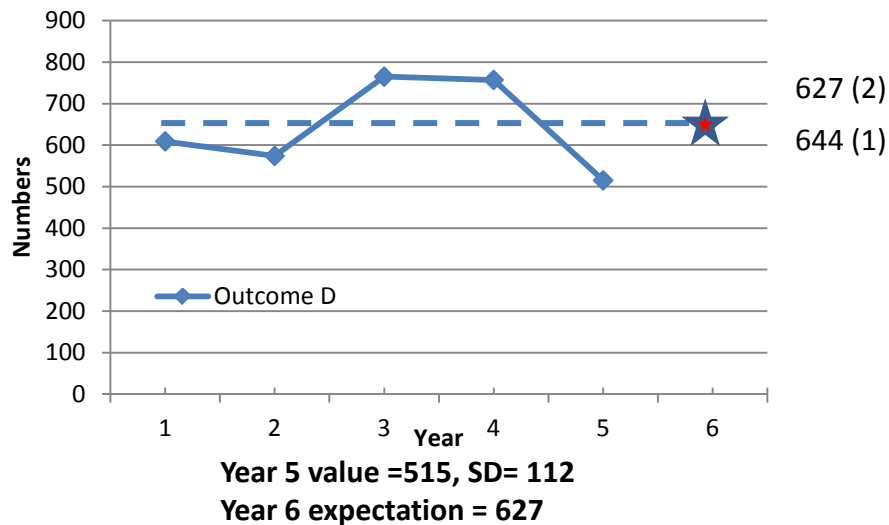
## 5-year data for Outcome B



## 5-year data for Outcome C

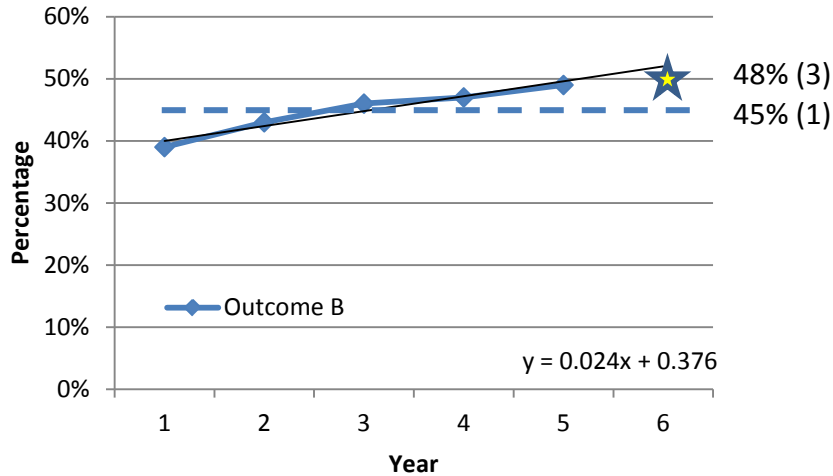


## 5-year data for Outcome D

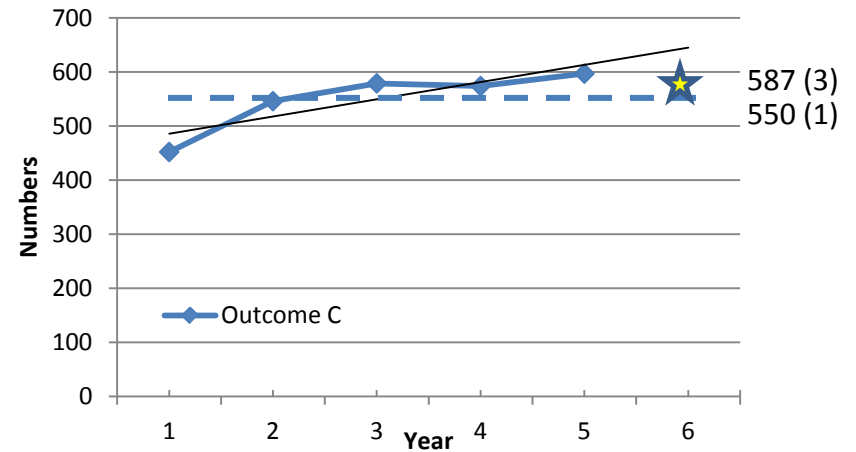


# Methodology 3 (Value of year 6 from 5-year Regression line- SD of same period)

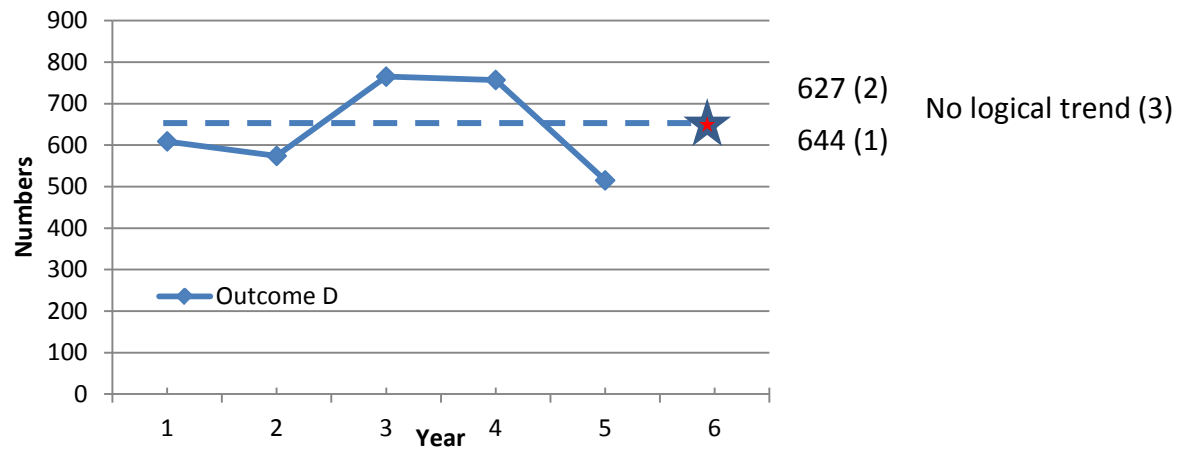
## 5-year data for Outcome B



## 5-year data for Outcome C



## 5-year data for Outcome D



# Methodologies 1-3 & Actual for C& D

